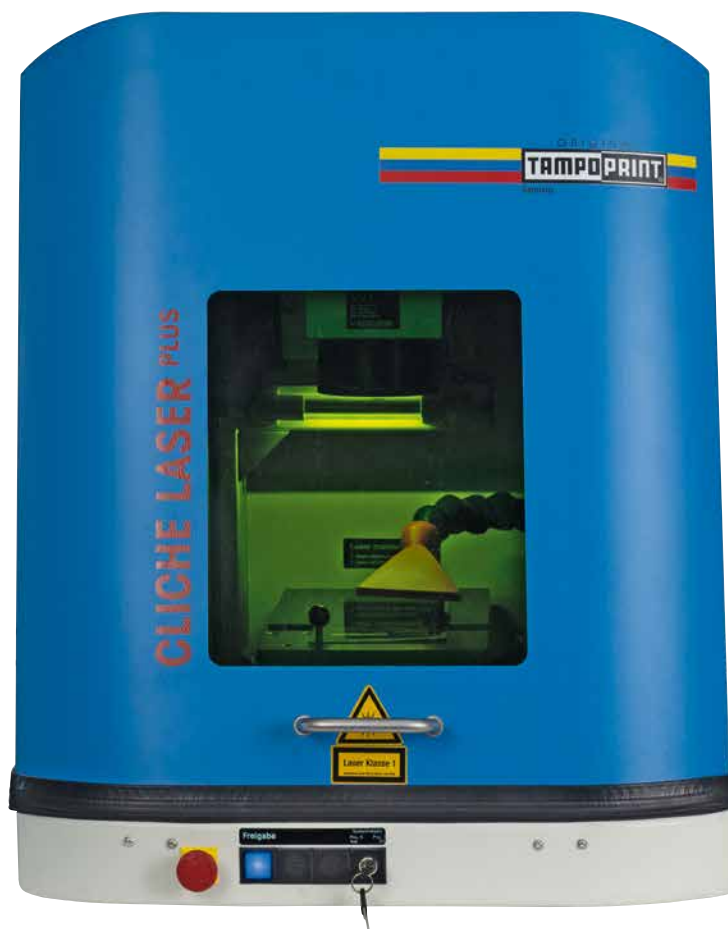


## CLICHE LASER PLUS Laser System



LASER SYSTEMS ACCESSORIES SERVICE

Do-it-yourself production of pad printing clichés  
Economic cliché laser (bench top unit)

Laser System

# CLICHE LASER PLUS

TAMPOPRINT offers you this cliché production station (bench top unit) at a top price-performance ratio. By updating this model the laser beam source was improved and the import functions were extended.

The production of a laser engraved Aloxid-special cliché with the **CLICHE LASER PLUS** is the most economic laser engraved cliché production on the market and clearly superior to the laser plotter systems with regard to precision and speed. The CLICHE LASER PLUS is extremely easy to operate for the user.

**Software:**

Predefined parameters for the different cliché types that were exclusively developed by TAMPOPRINT. Generation and handling of data that can be laser engraved. Software

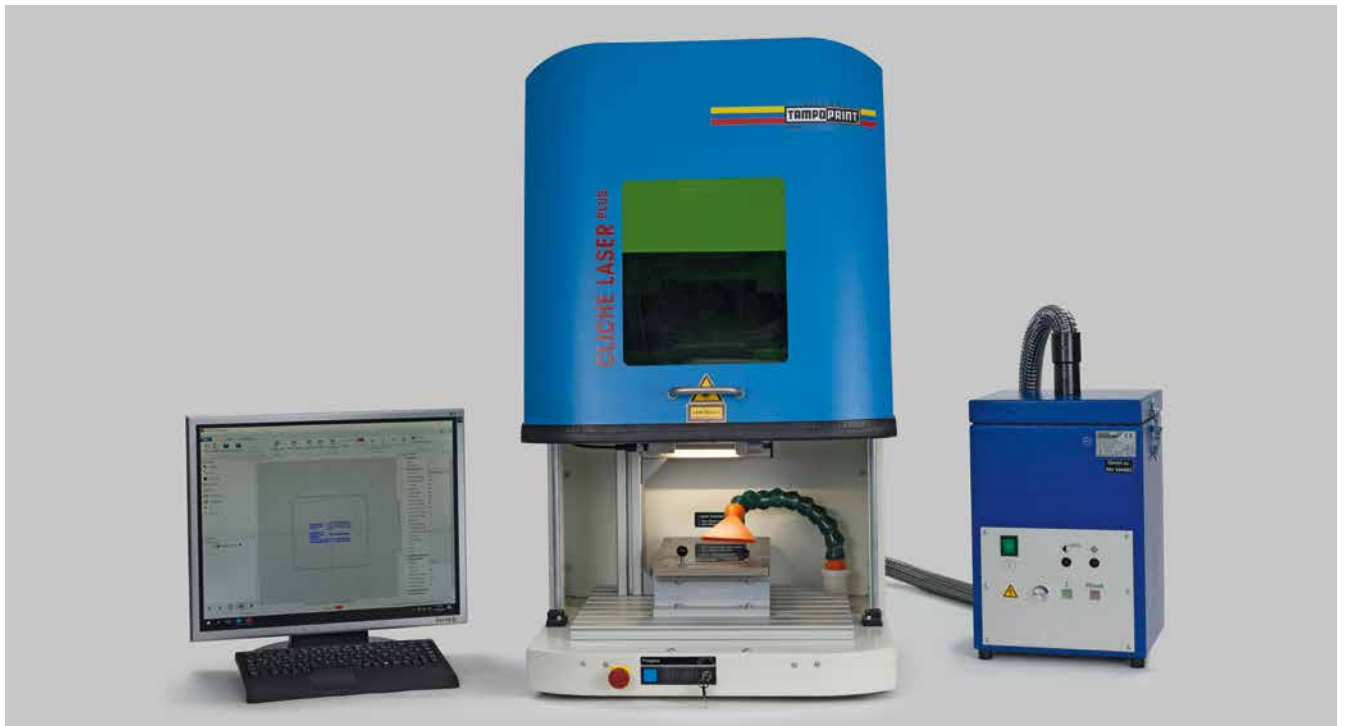
ALFALAS® Laser Suite pre-installed.

**Highlights:**

Operator independent, extremely simple operation, print image change directly at the PC, ideal for frequently changing images, constant quality of your pad printing results of almost 100%.

**What you don't need any more?**

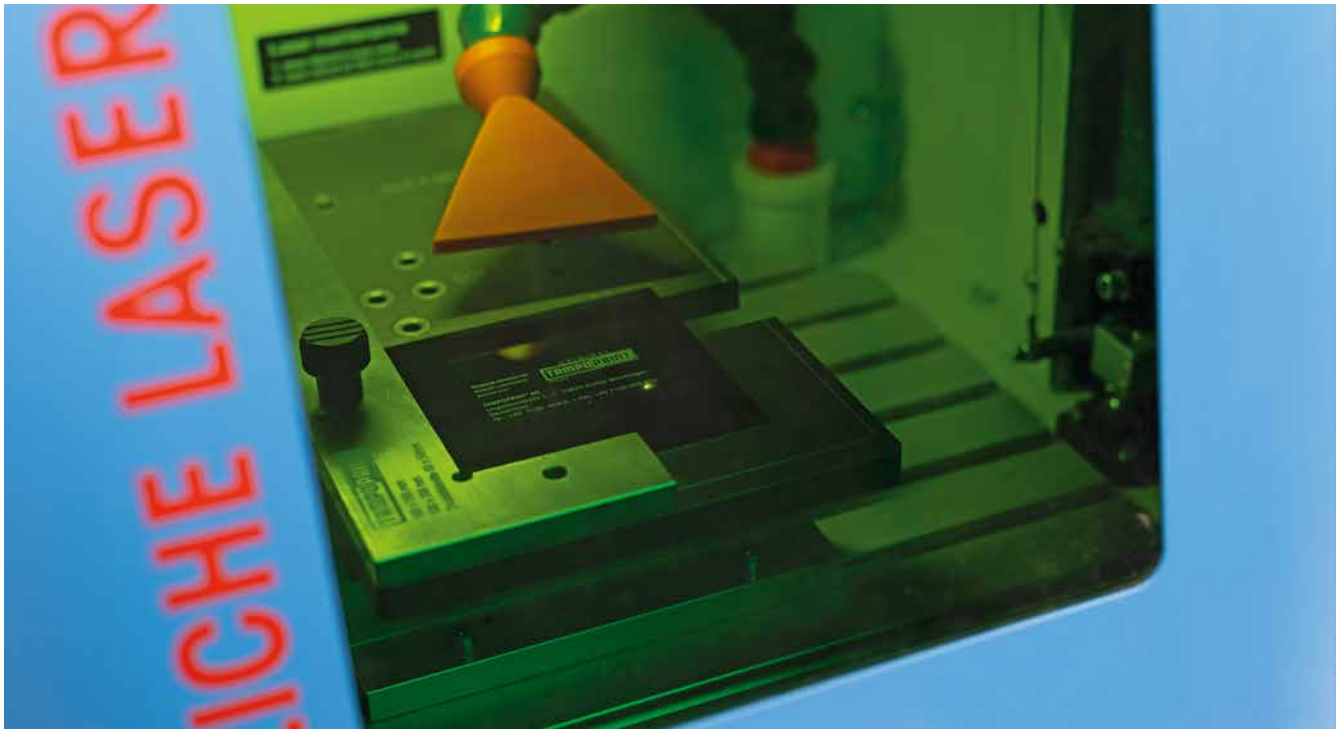
A special "room with amber light", exposure process, etching process, wash-out process, drying process, and all units and auxiliaries that are needed for the classic production of printing clichés.



**TAMPOPRINT CLICHE LASER PLUS**  
with monitor, keyboard (included in delivery)  
and suction and filter unit (option)

CLICHE LASER PLUS

# Focus on the cliché



**Laser engraving allows**  
an easy and fast production of your own clichés

Technology

# CLICHE LASER PLUS

CLICHE LASER PLUS		
Item No.		41 00 05
Operating system preinstalled		current Microsoft operating system, Multilanguage
Applications software preinstalled		ALFALAS® Laser Suite
Import print image data		vector/line graphics: *.dxf, *.ai, *.pdf, *.eps
Marking area max.	mm	110 x 110
Pad printing cliché types		Magnet-Aloxid, Magnet-microflex, Aloxid-special clichés
Pad printing cliché sizes up to max.	mm	300 x 150
Laser type	SK	62
Laser medium		Yb:YAG
Wavelength	nm	1064
Output power	W	< 20
Object lens	mm	f-Theta 160
Cooling		Air
Working chamber (Width x Depth)	mm	400 x 300
Inspection glass / Laser safety glass		Yes
Connected voltage +/-10 %		230V/1/N/PE
Housing design		laser class 1, DIN EN 60825.1
Width	mm	500
Depth	mm	1000
Height	mm	660/930 <sup>1)</sup>
Weight	approx. kg	90
Connections on the rear side of the unit		USB, network connection, monitor connection, connection adapter for suction and filter unit

1) with opened slide door

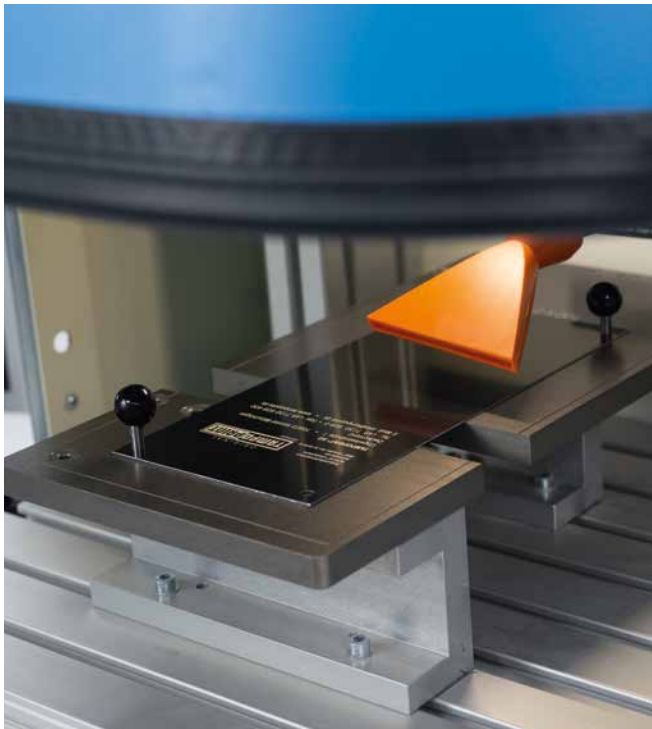
Space requirement without monitor, keyboard, suction and filter unit

Laser System

# CLICHE LASER PLUS

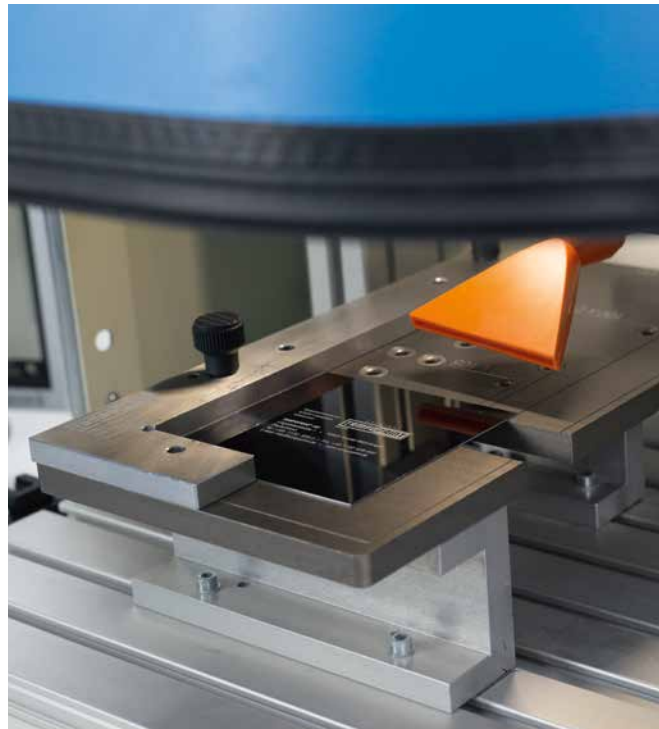
## CLICHE LASER PLUS

Multi cliché plate  
for cliché sizes from TAMPOPRINT



## CLICHE LASER PLUS

Cliché format adapter (option)  
for unpunched clichés and third-party products



## Scope of supply

PC (integrated in CLICHE LASER PLUS)  
Monitor 19"  
Wireless keyboard  
Software ALFALAS® Laser Suite  
Multi cliché plate

## Options

Cliché format adapter, tool-free assembly on the multi cliché plate, cliché sizes (depth x width):

80 x 80 mm: Item No. 41 09 21

80 x 100 mm: Item No. 41 08 98

100 x 100 mm: Item No. 41 08 99

120 x 120 mm: Item No. 41 09 20

Suction and filter unit according to BIA dust class H: Item No. 41 08 86.

Special production of holding plates for formats of third-party products.

Adapted marking area

Software iTAMPOPRINT

**TAMPOPRINT® GmbH**  
Lingwiesenstraße 1  
70825 Korntal-Münchingen  
GERMANY

Tel. +49 7150 928-0  
Fax +49 7150 928-400

info@tampoprint.de  
www.tampoprint.de

**TAMPOPRINT® IBERIA S.A.U.**  
Polígono Industrial Martorelles  
C/ Sant Martí, s/n (entre Gorgs y Mogent)  
08107 Martorelles (Barcelona), SPAIN

Tel. +34 93 2327161  
Fax +34 93 2471500

tampoprint@tampoprint.es  
www.tampoprint.es

**TAMPOPRINT® INTERNATIONAL CORP.**  
1400 26th Street, Vero Beach  
FL 32960  
USA

Tel.+1 772 778-8896, 800 810-8896  
Fax +1 772 778-8289

info@tampoprint.com  
www.tampoprint.com



Technical Data  
tampo.link/cliche-laser-plus

The reproduction of trademarks and brands used in this brochure, even if not explicitly expressed, does not justify the assumption that such names or symbols may be considered as free as defined by the Trademark Act and may therefore freely be used. The rights are the property of the respective owner. TAMPOPRINT products are permanently updated to keep pace with the latest technological developments. For this reason, figures and descriptions are non-binding. Our machines are manufactured based on the currently valid European Machinery Directives as well as the European product standards EN 1010 - 1 and EN 1010 - 2.

Copyright © TAMPOPRINT GmbH. Subject to technical changes and other modifications.

All locations are certified ISO 9001:2015

09/2021