

TAMPOPRINT®

CL - CLICHÉ LASER



Do-it-yourself production of tampon printing clichés

Economic cliché laser (bench top unit)

technologies for your future
made in germany

ORIGINAL

TAMPOPRINT®

Tampon printing machines
ALFALAS® Laser Systems
Automations

CL - CLICHÉ LASER bench top unit

TAMPOPRINT® offers you this cliché production station at a top price-performance ratio.

Operator independent, constant quality of your tampon printing results of almost 100%.

The production of a laser engraved Aloxid-special cliché with the TAMPOPRINT® "CL - CLICHÉ LASER" is the most economic laser engraved cliché production on the market and clearly superior to the laser plotter systems with regard to precision and speed. The TAMPOPRINT® "CL - CLICHÉ LASER" is extremely easy to operate for the user.

What you don't need any more?

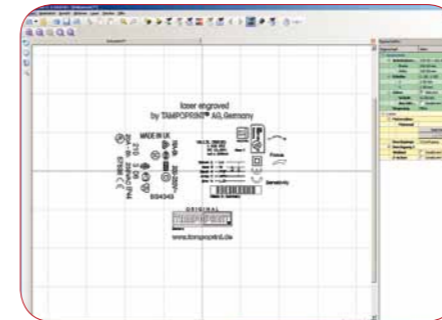
A special "room with amber light", exposure process, etching process, wash-out process, drying process, and all units and auxiliaries that are needed for the classic production of printing clichés.

In order to acquire knowledge of the digital pre-press, you can register for an intensive operator training.

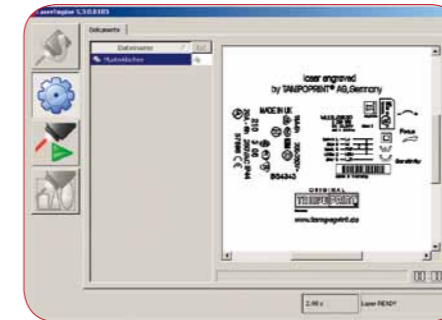
Enquiries to mailto:seminar@tampoprint.de



Software "LaserPlan CL"



Surface "LaserPlan CL" editor



Surface "LaserPlan CL" engine: job center



Predefined parameters for the different cliché types that were exclusively developed by TAMPOPRINT®. Generation and handling of data that can be laser engraved. Easy installation on your PC.

Importation of *.dxf printing data.

Selection of the parameters.

Quality assurance by archiving and administering of the laser jobs.

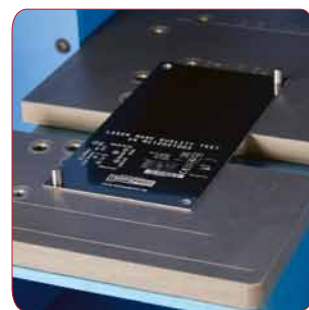


Consumables - tampon printing cliché



Developed EXCLUSIVELY by TAMPOPRINT® - 3 types of tampon printing clichés that can be laser engraved.

All clichés that can be laser engraved are specially designed for lasers with a wave length of 1064 nm. Unlimited storage.



Multi cliché plate for cliché sizes from TAMPOPRINT®



"LaserPlan CL" software on USB stick 2.0



Cliché format adapter for third-party products



Suction and filter unit

TAMPOPRINT® CL - CLICHÉ LASER	
Art. No.	41 00 00
Software "LaserPlan CL"	inclusive, on USB stick, for installation on a PC provided by customer (Windows, Multilingual, from version Windows XP)
Import filter	*.dxf (vector-oriented file format)
Data transfer	USB-B 2.0 interface for PC provided by customer
Parameter preconfigured	for TAMPOPRINT® cliché types (USB stick included in scope of supply)
Marking area	110 x 110 mm
Tampon printing cliché types	Magnet-Aloxid, Magnet-microflex, Aloxid-special cliché plates
Cliché sizes TAMPOPRINT® "hermetic" systems	105 x 60, 140 x 70, 215 x 100, 300 x 150 mm for ink/doctoring cup sizes Ø 42-140 mm
Multi cliché plate	with pins "H" bore holes
Laser medium	Nd:YAG, 1064 nm
Output power	6W +/-5%
Objective	f-Theta 160 mm
Cooling (ventilator)	air-cooled
Connected voltage +/-10 %	230V/1/N/PE, 50/60 Hz
Connected value	1,0 kW
Housing design	laser class 1, DIN EN 60825.1
Inspection glass / laser safety glass	yes
Working chamber (WxDxH)	340 x 240 x 120 mm (main working chamber), 170 x 350 x 30 mm (main working chamber)
Dimensions (WidthxDepthxHeight)	473 x 620 x 625/960 ¹⁾ mm
Weight	approx. 68 kg
Extraction connector	yes

¹⁾ with opened slide door

Options

- Cliché format adapter, tool-free assembly on the multi cliché plate, cliché sizes (depth x width):
 - 80 x 80 mm: Art.No. 41 09 20
 - 80 x 100 mm: Art.No. 41 08 98
 - 100 x 100 mm: Art.No. 41 08 99
 - 120 x 120 mm: Art.No. 41 09 21
- Suction and filter unit according to BIA dust class H: Art.No. 41 08 86
- Special production of holding plates for formats of third-party products

Scope of supply

- Multi cliché plate
- Software "LaserPlan CL" on USB stick 2.0

Trademarks of TAMPOPRINT® AG:



Dealer:

Contact/Sales:
E-Mail: alfalas@tampoprint.de
Fax: +49 7150 928-212



TAMPOPRINT® AG
Lingwiesenstraße 1
70825 Kornthal-Münchingen, GERMANY
☎ +49 7150 928-0
Fax: +49 7150 928-400
E-Mail: info@tampoprint.de
"Ventes et Affaires Françaises"
☎ +49 7150 928-144
Fax: +49 7150 928-432
E-Mail: ventes@tampoprint.de
http: www.tampoprint.de

TAMPOPRINT® INTERNATIONAL CORP.
1400 26th Street, Vero Beach, FL 32960, USA
☎ +1 772 778-8896, 800 810-8896
Fax: +1 772 778-8289
E-Mail: sales@tampoprint.com
http: www.tampoprint.com

TAMPOPRINT® IBERIA S.A.U.
c/Caspe 127-135 local B, 08013 Barcelona, SPAIN
☎ +34 93 2327161
Fax: +34 93 2471500
E-Mail: tampoprint@tampoprint.es
http: www.tampoprint.es



The reproduction of trademarks and brands used in this brochure, even if not explicitly expressed, does not justify the assumption that such names or symbols may be considered as free as defined by the Trademark Act and may therefore freely be used. The rights are the property of the respective owner.

TAMPOPRINT® products are permanently updated to keep pace with the latest technological developments. For this reason, figures and descriptions are non-binding. Our machines are manufactured based on the currently valid European Machinery Directives as well as the European product standards EN 1010 - 1 and EN 1010 - 2.

Subject to alterations! ©Copyright